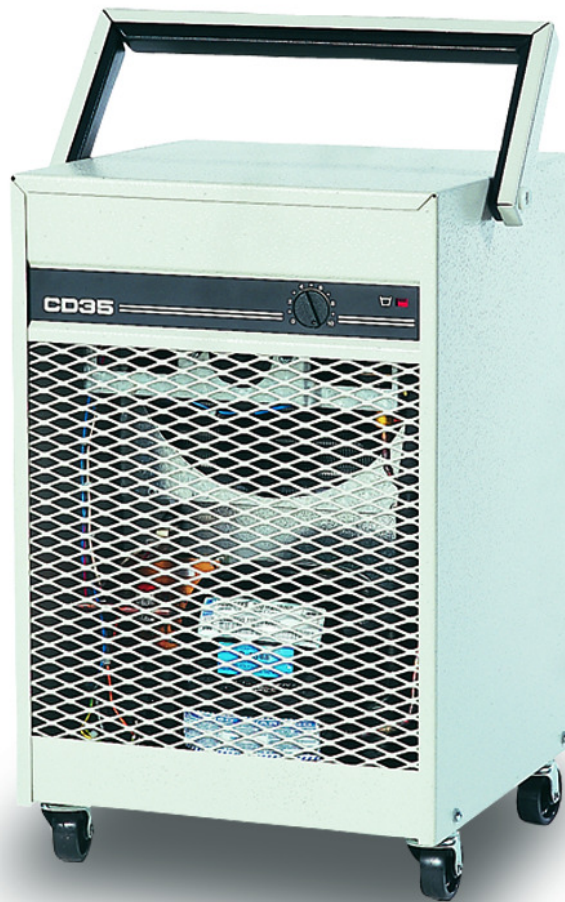


# **HEAVY DUTY CD35 DEHUMIDIFIER USER MANUAL**



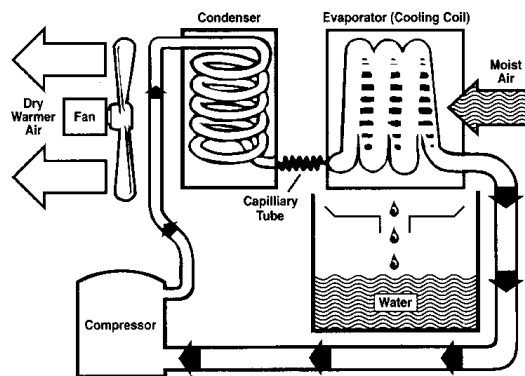
## INTRODUCTION

Your Ebac Dehumidifier is packed in a plastic wrapper – please ensure that it is disposed of safely and where it will not be a danger to children

Your Ebac Heavy Duty Dehumidifier is designed to help dry flooded or damp areas. Ideal where natural drying is just too slow. Drying with a dehumidifier enables fast drying without problems associated with heat drying plaster, etc can crack.

### HOW YOUR DEHUMIDIFIER WORKS

Your dehumidifier draws in the moist air, cooling it to a temperature where excess moisture will condense, thereby removing the excess moisture. This in turn dries anything in the immediate area which is damp. The moisture is collected in the water container. The air is rewarmed and passed back approximately 2°C warmer.



### OPERATING YOUR DEHUMIDIFIER

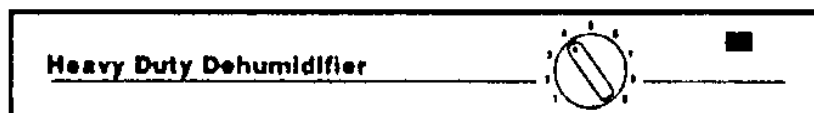
The amount of moisture removed by your dehumidifier will vary according to the conditions in which it is operating. For example, operating in very cold temperatures will reduce water extraction levels.

The time taken to dry an area will depend on the size of area to be dried and level of moisture to begin with. To achieve maximum benefit from your dehumidifier, you should ensure :-

- a) It is permanently connected to the mains and controlled via the Humidistat
- b) It is not switched off for long periods of time due to an incorrect setting of the Humidistat or because the container is full.
- c) Door to areas not to be dried are kept closed.
- d) External doors and windows are kept closed as much as possible.

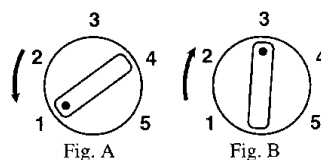
### CONTROLS

Your dehumidifier is fitted with an adjustable humidistat and container full indicator.



### SWITCHING ON YOUR DEHUMIDIFIER

Before connecting it to the mains you should ensure that the humidistat is turned fully anti-clockwise (fig A). Once connected to the mains power, the humidistat control should be turned clockwise until you hear the unit operate (fig B). To protect the compressor, you should allow 5 minutes between switching the dehumidifier off and on again.

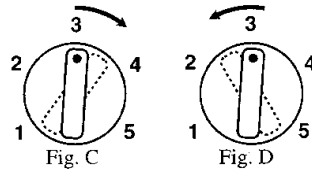


## OPERATING THE HUMIDISTAT

The humidistat works in a similar way to a central heating thermostat, but instead of measuring temperature, it measures the amount of moisture in the air. You may select the level of moisture you require (known as Relative Humidity) and the unit will operate to achieve that level and then switch off.

As a general guide, the higher the setting the lower the Relative Humidity will be before the machine switches off. Therefore the machine will operate longer to achieve this.

If the dehumidifier switches off and drying is not complete it is possible that the humidistat setting is too low and may need increasing (fig C.). Conversely, if you no longer have condensation and the unit is still operating, then the humidistat setting may need reducing (fig D.)



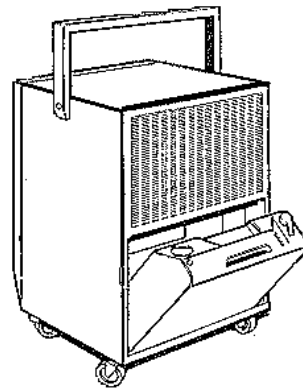
## DEFROST OPERATION

At certain temperatures, the water taken freezes onto the pipes inside your dehumidifier and therefore needs to be defrosted. This model features an automatic defrost which will clear any ice build up.

## USER MAINTENANCE

### EMPTYING THE WATER CONTAINER

When the water container is full an internal float mechanism will switch the unit off. This is indicated by the illumination of the “full” light on the front control panel. The water container is at the rear of the unit. To empty the container, carefully remove the water container. When emptied replace



### PERMANENT DRAINAGE

When your dehumidifier is to be used constantly in one area, it can be fitted to drain continuously, eliminating the need to empty the water container. Ideal when the property is to be left unoccupied.

For this you will need a length of PVC tubing, 18mm external diameter X 12mm internal diameter and a hose clip of the same size. Disconnect your dehumidifier from the power supply before fitting permanent drainage.

Remove the water container and pass the tube through the hole in the base of the dehumidifier. Place the hose clip on the tubing and push the tubing over the outlet on the underside of the drain tray and fasten the hose clip. **DO NOT** over tighten the clip or it may crack the drain tray. The water container should not be replaced whilst the drainage kit is in use.

### USE OF PERMANENT DRAINAGE

When in use tubing should be run to a suitable drainage point, ensuring that the tube doesn't rise above the drain tray, otherwise flooding may occur.

## IF YOUR DEHUMIDIFIER FAILS TO OPERATE

1. Check that the plug is fully pushed into the socket and is switched on.
  2. Check with some other electrical device that the wall socket is "live". If it is not, contact a qualified electrician.
  3. Check the fuse in the plug. If you replace the fuse, refit with a 13Amp fuse.
  4. Check the humidistat control is turned clockwise.
  5. Check that the water container is not full.
- Should none of the above remedies work, then disconnect from the mains. Contact the help line on 01388 664400. DO NOT attempt to repair the unit or unscrew the outer casing.

## ELECTRICAL CONNECTION

If the appliance is fitted with a plug for which your socket is unsuitable, then it should be cut off and an appropriate plug fitted.

This appliance complies with the suppression requirements of the EEC direction 82/199/EEC as embodied in BS800:1988.

IMPORTANT:- The wires in this mains lead are coloured in accordance with the following code:-

|                |         |
|----------------|---------|
| Green & Yellow | Earth   |
| Blue           | Neutral |
| Brown          | Live    |

As the colours of the wires in the mains lead of this appliance may not correspond with the coloured markings identifying the terminals in your own plug, proceed as follows:

The wire which is coloured Green and Yellow must be connected to the terminal in the plug which is marked with the letter E or by the Earth Symbol or coloured Green and Yellow. The wire which is coloured Blue must be connected to the terminal in the plug which is marked with the letter N or coloured Black. The wire which is coloured Brown must be connected to the terminal which is marked with the letter L or coloured Red.

You must dispose of the non rewirable plug once it has been removed from the flexible cord. It is dangerous to attempt to insert the plug into any electrical socket elsewhere in the house. If the flexible cord becomes damaged it must be replaced by an identical cord.

## CHANGING THE FUSE

Only 13 Amp fuses that are ASTA approved to BS1362 should be used.

The fuse cover must be refitted after replacement of the fuse. In the event of the fuse cover being lost or damaged, the plug must not be used until a replacement is obtained. Replacement fuse covers, which must be coloured BLACK, are obtainable from electrical retailers.

**WARNING – THIS APPLIANCE MUST BE EARTHED**

## TECHNICAL SPECIFICATIONS

|                                       |                   |
|---------------------------------------|-------------------|
| CD35                                  | 230V/50Hz/1 Phase |
| Height                                | 550 mm            |
| Width                                 | 345 mm            |
| Depth                                 | 350 mm            |
| Weight                                | 26 kg             |
| Min Operating Temperature             | 1 °C              |
| Max Operating Temperature             | 35 °C             |
| Water Extraction (24hrs) 32°C / 90%RH | 10 l              |
| Max Power Consumption 32°C / 90%RH    | 250 W             |
| Max Running Current                   | 2 A               |
| Fuse Rating (UK)                      | 13 A              |

## WARNINGS

- This appliance can be used by children from 8 years and above and persons with reduced physical, sensory or mental capabilities or lack of experience and knowledge if they have been given supervision or instruction concerning use of the application in a safe way and understand the hazards involved.
- Children shall not play with the appliance.
- Cleaning and user maintenance shall not be made by children without supervision.
- If the SUPPLY CORD is damaged, it must be replaced by the manufacturer, its service agent or similarly qualified person in order to avoid hazard.
- This product contains fluorinated greenhouse gases covered by the Kyoto Protocol. The refrigeration system is hermetically sealed.
- The Global Warming Potential (GWP) of refrigerants used in products manufactured by Ebac Industrial Products Ltd is as follows  
R134a – 1300  
R407c – 1610
- For type and weight of refrigerant contained in this unit, please refer to the product data label
- Due to the high pressures within the refrigeration circuit, under no circumstances must direct heat be applied to the evaporator coil in an attempt to remove the build-up of ice.
- No attempt should be made to cut open any part of the refrigeration circuit due to high pressures and gas involved.
- If the unit is switched off at the mains power supply for any reason, the unit must be allowed to stand at rest for at least three minutes before restarting.
- For correct installation and operation the unit inlet and outlet must have a clearance of 0.5M from all adjacent surfaces and or structures.
- Do not remove the front or rear panels
- This machine should be serviced by qualified Ebac personnel or other persons having technical competence servicing refrigeration equipment following the instructions in the Ebac service manual.
- Ebac service manuals and spares lists are available upon request by contacting your local Ebac distributor.
- Never operate the unit in a bathroom or swimming pool area
- Do not poke objects into any of the grilles on the machine.
- Do not cover or obstruct the air inlet or outlet.
- When running, the noise level of this machine is less than 70dba
- This machine complies with the electromagnetic compatibility 1992 regulations.
- This machine has been manufactured in the United Kingdom.
- Ensure this unit is protected by a 15A Circuit



|         |              |
|---------|--------------|
| Drawing | : - TPC204   |
| Issue   | : - 5        |
| Date    | : - 30/11/16 |



|         |              |
|---------|--------------|
| Drawing | : - TPC204   |
| Issue   | : - 5        |
| Date    | : - 30/11/16 |



### **UK Head Office**

Ebac Industrial Products Ltd  
St Helens Trading Estate  
Bishop Auckland  
County Durham  
DL14 9AD

Tel: +44 (0) 1388 664400  
Fax: +44 (0) 1388 662590

[www.eipl.co.uk](http://www.eipl.co.uk)  
[sales@eipl.co.uk](mailto:sales@eipl.co.uk)

### **American Sales Office**

Ebac Industrial Products Inc  
700 Thimble Shoals Blvd.  
Suite 109, Newport News  
Virginia, 23606-2575  
USA

Tel: +01 757 873 6800  
Fax: +01 757 873 3632

[www.ebacusa.com](http://www.ebacusa.com)  
[sales@ebacusa.com](mailto:sales@ebacusa.com)

### **German Sales Office**

Ebac Industrial Products Ltd.  
Gartenfelder Str. 29-37  
Gebäude 35  
D-13599, Berlin  
Germany

Tel: +49 3043 557241  
Fax: +49 3043 557240

[www.eip-ltd.de](http://www.eip-ltd.de)  
[sales@eip-ltd.de](mailto:sales@eip-ltd.de)